

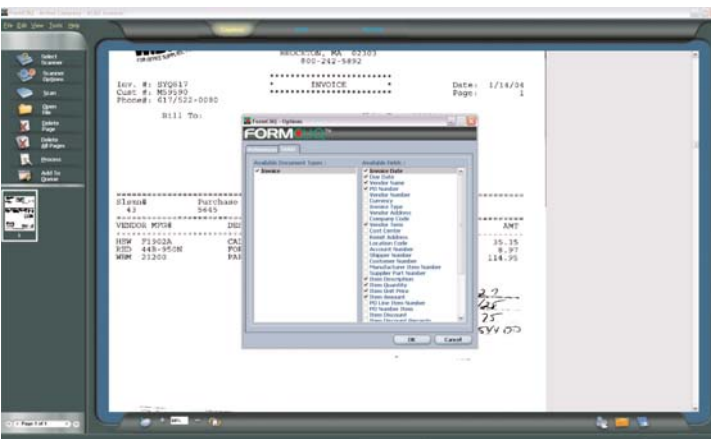
# FormCliQ™ Invoices

## Automated Invoice Reading for Everyone

The accurate and most complete invoice reading solution for small and medium-sized companies

### Invoices, Invoices, Invoices!

Invoice reading software has successfully reduced the cost of processing at large organizations that could afford it. But, what about the rest of us?



FormCliQ Invoices requires no setup. Just select the data elements you wish to read!

Now, even smaller companies with moderate volume of invoices can enjoy accuracy, cost savings, and work efficiency.

FormCliQ™ Invoices to the rescue! With FormCliQ Invoices, *you do not need to set up any applications, forms, or fields.* You simply scan the invoices, and verify the data. That's it.

FormCliQ Invoices is priced to suit the budget of users with monthly volume between 1,000 and 3,000 invoice pages. No other software solution offers more performance at such great economy!

Period.

### Automated Indexing, Archival and Retrieval

If you need to access an invoice you entered, just type any word or number that appears in any field

#### Go From This

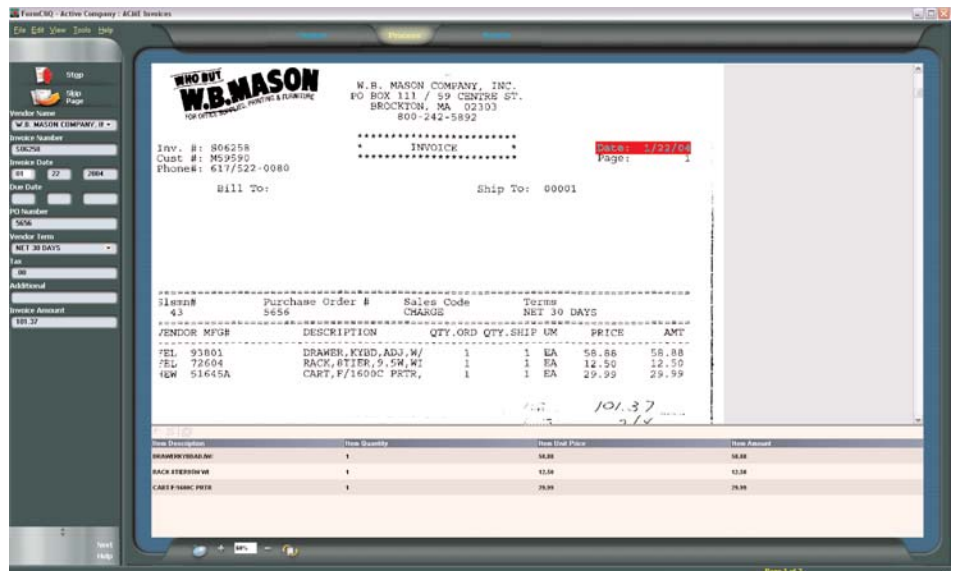
FormCliQ processed. In just seconds FormCliQ will display all the invoices that contain your selection. You never have to archive using keywords or indices; all is done as part of the processing.

### SMART Technology at Prices You Can Afford

FormCliQ Invoices utilizes advanced technologies designed to automate and greatly simplify invoice data entry. FormCliQ reads the invoice automatically, you click to verify it. That's it. Your data will be even more accurate than had you typed it in yourself manually!

CharacTell technology has helped organizations with daily invoice volumes as high as 15,000 reduce their costs. Now, users with lower volumes can enjoy it too. To evaluate FormCliQ with no obligation [www.formcliq.com](http://www.formcliq.com), Or, call us, or your authorized reseller today, and get *all the functionality you need without the extra cost you don't.* ■

#### To This



FormCliQ Invoices reads the entire invoice, including table line items automatically, and displays the data for instant verification prior to exporting it to your database.

The result? Accurate data available for entry faster and less expensively.



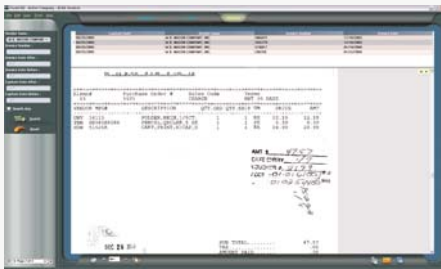
# FormCliQ™ Invoices Technical Specifications



Invoices may be entered for processing at a later, more convenient time.



The page balancing tool provides yet another validation that the data is accurate.



Documents can be retrieved quickly.

CharacTell Ltd.  
[www.formcliq.com](http://www.formcliq.com)  
[sales@charactell.com](mailto:sales@charactell.com)

US: phone 617-965-1014  
 fax 617-965-0010

Israel: phone +972-9-741-0434  
 fax +972-9-741-0478

CharacTell™, FormCliQ™, the CharacTell logo, and the FormCliQ logo, are trademarks of CharacTell Ltd.

Access® and SQL Server® are registered trademarks of Microsoft Corporation.

Other trademarks may be owned by their respective intellectual property owners.

## SYSTEM CHARACTERISTICS

Configuration	Stand-alone application; Select multiple “seat” configuration Multiple retrieval seat configurations available for some package(s)
Functions	Image Capture, OCR Processing, Data Verification & Archive/Search
Document Access	From FormCliQ, no keywords entry required
GUI Language	English (translation to other languages is possible)
User Help	User Guide, on-line context sensitive help

## KEY USER FEATURES

GUI Modes	Easy to navigate processing modes: Capture, Process, Search (specific action buttons for each mode appear dynamically)
Invoice Reading	No setup of application, forms, or fields is required
Data Reading	Users may select data elements desired from a menu (sample list): <i>Above/below table:</i> Vendor name, invoice date, number, PO number, due date, terms, total <i>Table items:</i> Description, quantity, unit price, item price, item discount
Item Handling	Searched documents may be saved, printed, or emailed via system default smtp mail server
Document Security	Users may create and use separate document structures for different companies or sets of documents

## TECHNOLOGY

OCR Languages	English US, UK, CAN, AU, NZ, German, Spanish
Field Types	Individual summary fields & nearly automated table reading

## DATA CHARACTERISTICS

Image Inputs	Disk files import and direct job oriented scanning
Image Formats	TIFF Uncompressed, CCITT Group 3 and 4, BMP, JPEG, PDF
Scanner Input	Direct scanning from any TWAIN compatible scanner Automated Document Feeding and duplex scanning are supported
Resolution	<b>Recommended:</b> 300 DPI; <b>Supported:</b> 200 DPI to 300 DPI
Data Export	<i>QuickBooks:</i> same support as in FormCliQ Office (US versions only)
Formats	<i>Standard:</i> XML, CSV <i>Custom:</i> databases supporting connection string integration
Image Export	TIFF, PDF, Searchable PDF
Formats	

## SYSTEM REQUIREMENTS

Operating System	Windows XP (SP4)/Windows Vista (SP3)/Windows 7
CPU	<b>Recommended:</b> P4 3Ghz or higher <b>Supported:</b> Pentium 3 1GHZ
Memory	<b>Recommended:</b> 1GB RAM or higher <b>Required:</b> 256MB RAM
Disk Space	250Mb of available disk space or more (depending on archive size)
Scanner	TWAIN compatible scanner SCSI or USB interface
Internet	Required for installation only