

FormCliQ™ Office 2010 Edition



The first ever, practical,
Business data entry and archive for every office™

Business Data, Documents!

In your business, you receive bills and invoices, and manage documents of all types. You must enter data to your financial system, and access documents quickly.

SMART Technology Makes It Easy for You

FormCliQ Invoices utilizes unique technologies which are designed to automate and greatly simplify

invoice data entry that are not available elsewhere.

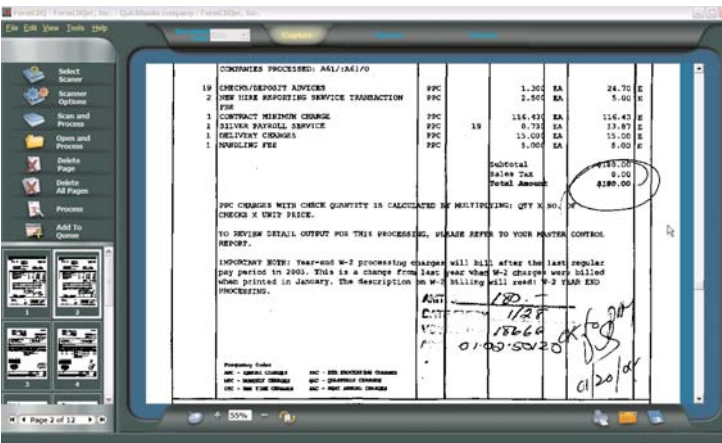
You scan the invoices into FormCliQ and watch it process them automatically. To make any corrections, if needed, you click on the image with your mouse. FormCliQ makes the adjustments, and remembers your selections.

By eliminating tedious keying of data FormCliQ saves time. The validations FormCliQ performs automatically, reduce the chances of errors and improve accuracy.

If you need to access an invoice, type any word or number that appears in a field FormCliQ processed. FormCliQ will display all the invoices that contain your selection. You never have to use keywords or indices manually!

CharacTell technology has helped organizations with daily invoice volumes as high as 15,000 reduce their costs. Now, users with lower volumes can enjoy it too. To evaluate FormCliQ with no obligation www.formcliq.com, Or, call us, or your authorized reseller today, and get *all the functionality you need without the extra cost you don't.* ■

Go From This



FormCliQ scans bills and other documents, transfers the data, and archives

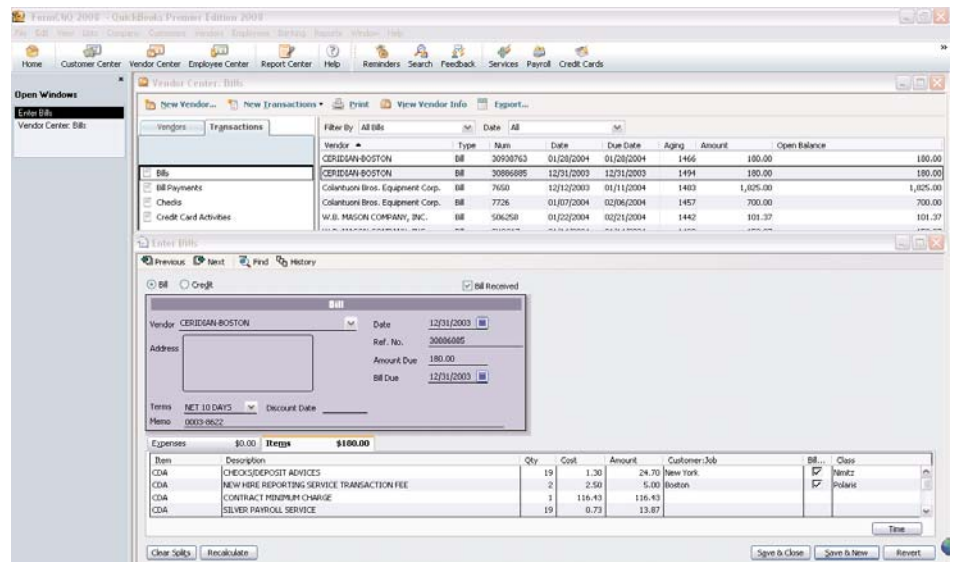
FormCliQ™ Office to the rescue! With FormCliQ, you scan your incoming bills or invoices, click on the data you need to transfer into QuickBooks, and watch the process take place mostly automatically.

If you ever need an invoice, you can find its image in the FormCliQ archive in seconds.

FormCliQ speeds more accurate data entry into QuickBooks®, improves staff efficiency, and gives you instant access to your invoices.

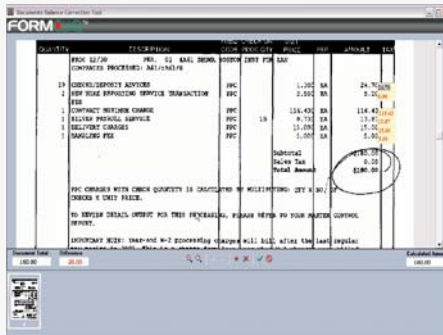
And, FormCliQ is economical. Purchase it for less than \$300, or less per seat as you expand.

To This

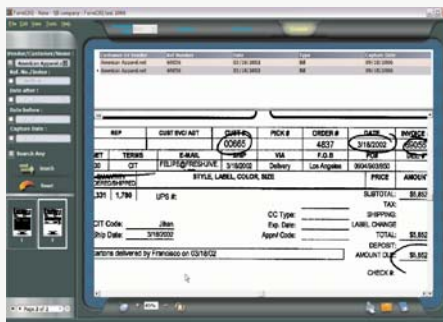


Data is entered to QuickBooks fast, and more accurately





Easy to use balancing tool ensures accuracy



Documents can be retrieved quickly

CharacTell Ltd.
www.formcliq.com
sales@charactell.com

US: phone 617-965-1014
 fax 617-965-0010

Israel: phone +972-9-741-0434
 fax +972-9-741-0478

CharacTell™, FormCliQ™, FormStorm™, Form Processing That Works™, Business Data Entry and Document Archive for Every Office™, the CharacTell logo, the FormCliQ logo, are trademarks of CharacTell Ltd.

QuickBooks® and Intuit® are registered trademarks of Intuit, Inc.

Windows® and Access® are registered trademarks of Microsoft Corporation.

Other trademarks may be owned by their respective intellectual property owners.

SYSTEM CHARACTERISTICS

Configuration & User Management	Stand-alone application; Multiple users per “seat” Networked, multiple seat configurations available
Functions	Image Capture, OCR Processing, Data Verification & Archive/Search
Document Access	From FormCliQ, QuickBooks, any active application
GUI Language	English
User Help	User Guide, Reference Card, tutorials & on-line context sensitive help

FINANCIAL ACCOUNTING SYSTEMS SUPPORTED

QuickBooks (US versions only)	Pro: 2002, 2003, 2004, 2005, 2006, 2007, 2008, 2009, 2010 Premier: 2002, 2003, 2004, 2005, 2006, 2007, 2008, 2009, 2010 Enterprise: 2002, 2003, 2004, 2005, 2006, 2007, 2008, 2009, 2010
Integration	QuickBooks SDK version 8.0
Data Capture	QuickBooks required fields, QuickBooks fields: class, account/item, job

TECHNOLOGY

OCR Languages	English US; Printed alpha, numeric & alphanumeric characters
Field Types	Individual fields & nearly automated table reading
Image Enhancement	Adaptive thresholding, deskew, rotation, despeckle, line & shade removal, border removal & fill, broken character repair
Form ID	Advanced ID technology supports virtually unlimited number of forms
Image Retrieval	Search-On-Click offers instant access to archived document

DATA CHARACTERISTICS

Image Inputs	Disk files and direct job oriented scanning
Image Formats	TIFF Uncompressed, CCITT Group 3 and 4, BMP, JPEG, PDF (image)
Scanner Input	Direct scanning from any TWAIN compatible scanner Automated Document Feeding and duplex scanning are supported Automated Document Feeding is recommended for higher volumes
Resolution	Recommended: 200 DPI Supported: 200 DPI to 300 DPI
Image Size	Up to legal size in portrait or landscape (or 8,000 x 8,000 pixels)
Output Formats	QuickBooks compatible format

SYSTEM REQUIREMENTS

Operating System	Windows XP (SP4)/Windows 7 (Compatibility with QuickBooks systems running on Windows Vista is not assured. As part of their evaluation of FormCliQ, users are asked to install and test compatibility on Windows Vista before purchasing FormCliQ)
CPU	Recommended: P4 3Ghz or higher Supported: Pentium 3 1GHZ
Memory	Recommended: 1GB RAM or higher Required: 256MB RAM
Disk Space	250Mb of available disk space or more (depending on archive size)
Scanner	TWAIN compatible scanner SCSI or USB interface
Internet	Required for installation only